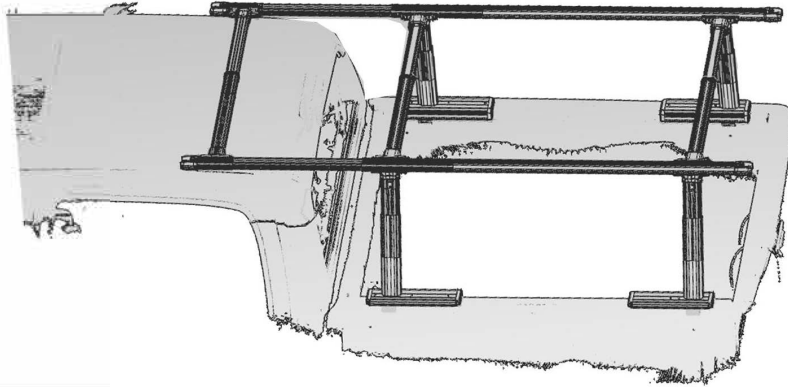


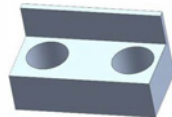
2286 CRAFTSMEN BED RACK XL



Contents . Contenu . Contenido



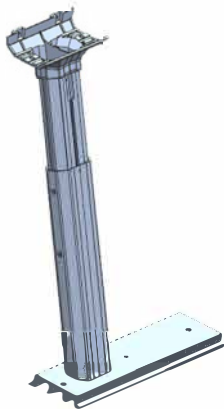
Base 4 X



Base gasket 8X



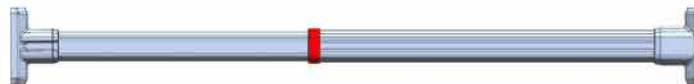
Hook claw 8X



main body 4 X



Short cross bar 2X



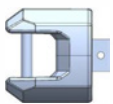
Short cross bar 1X



**Nut plate (Hole spacing 104MM)
2X**



Nut plate (Hole spacing 123MM) 4X



Long cross bar plug 4X





Short joint 2X



Long cross bar 2X

 **M10*60 16X**

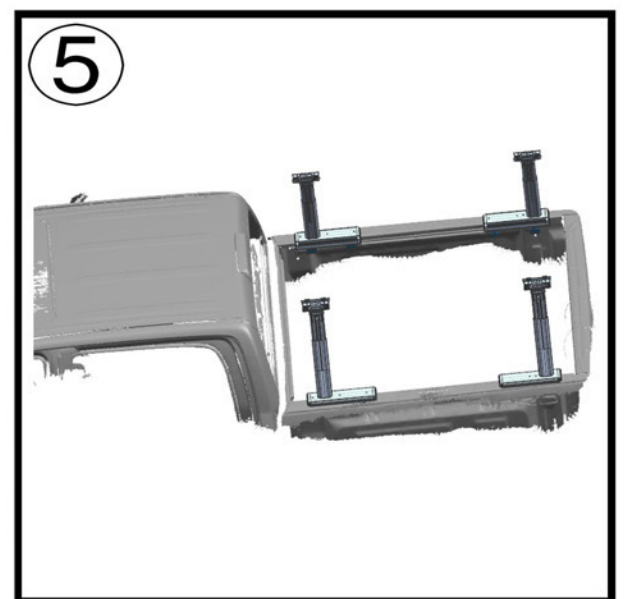
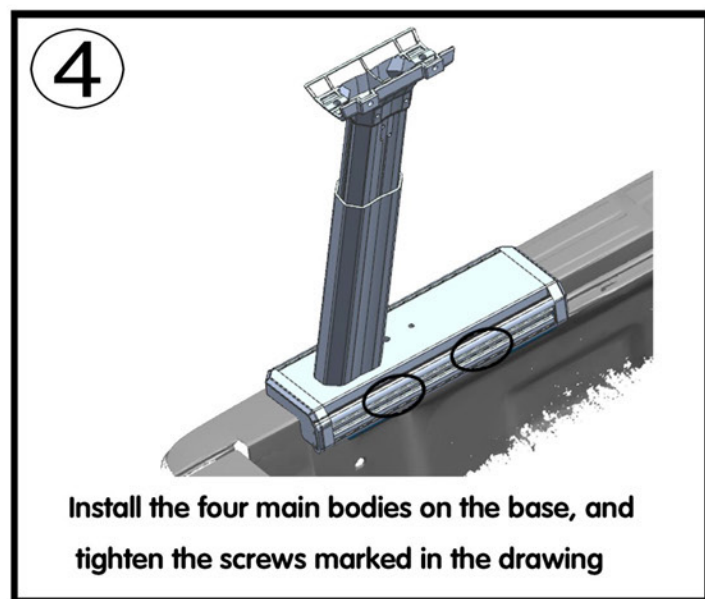
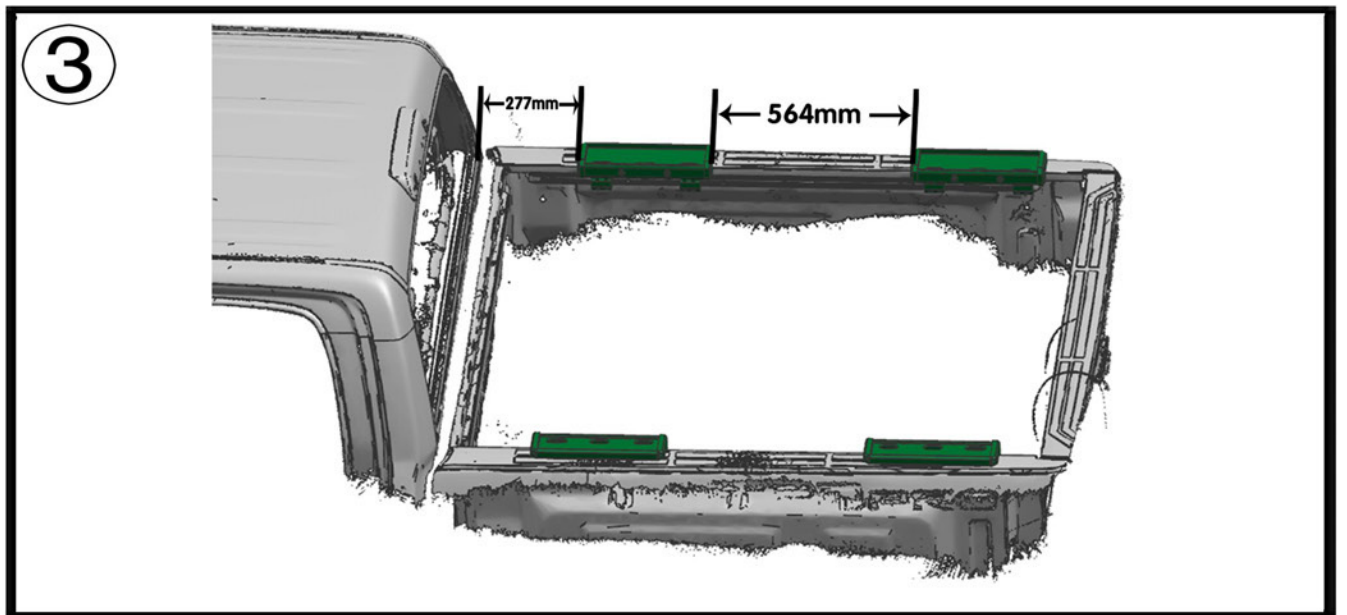
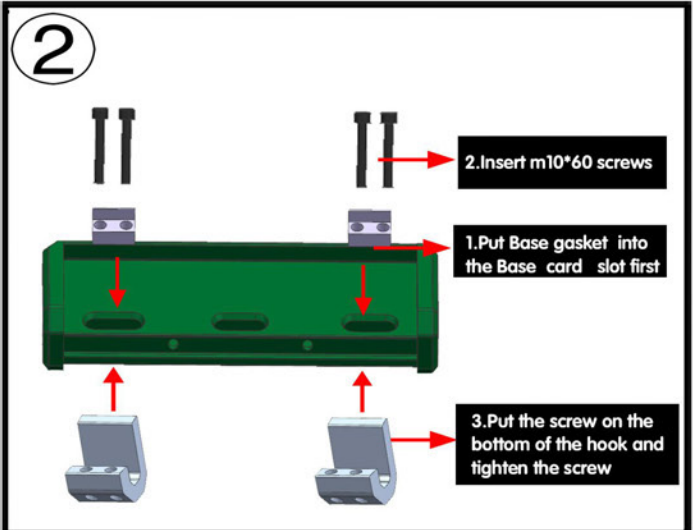
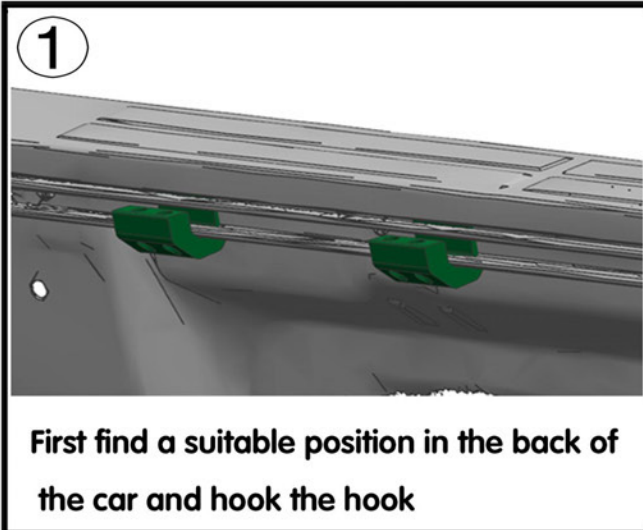
 **M6*16 28X**

 **M6 8X (14*14)**  **M6 4X**

 **M6*30 4X**

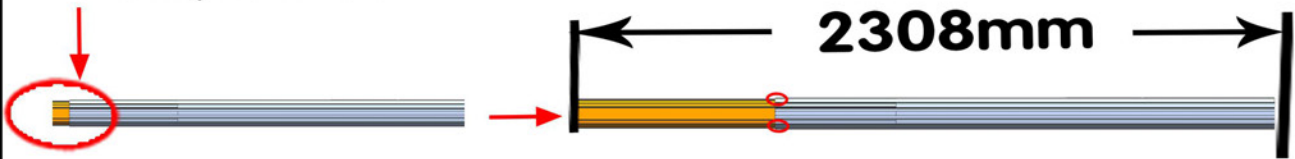
 **M6 1X**

 **M6 8X**



⑥

Pull away from here



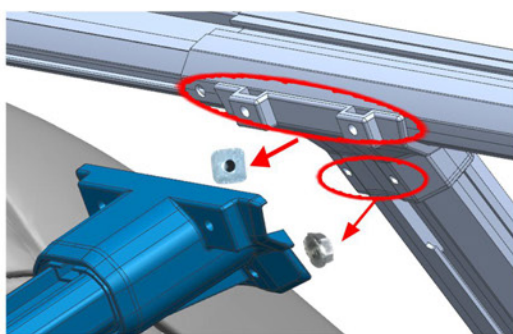
Take out two long cross bars, loosen the screws marked in the above figure, and lengthen the cross bars to 2308 mm, Then tighten the screws.

⑦



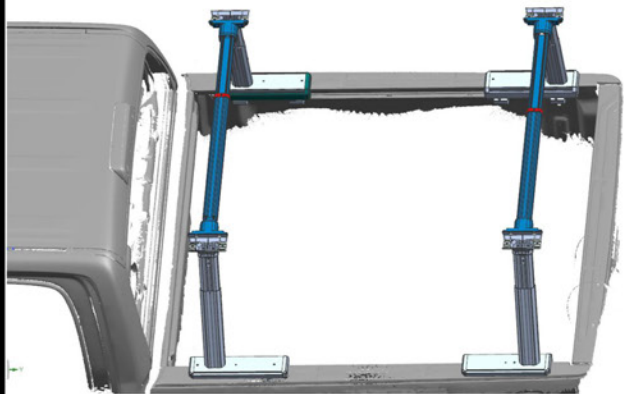
Take out the accessories in the above picture, first put the short joint on the long pipe head, then put the plug head, and finally fix it with M6*30 screws, The plug is notched upward.

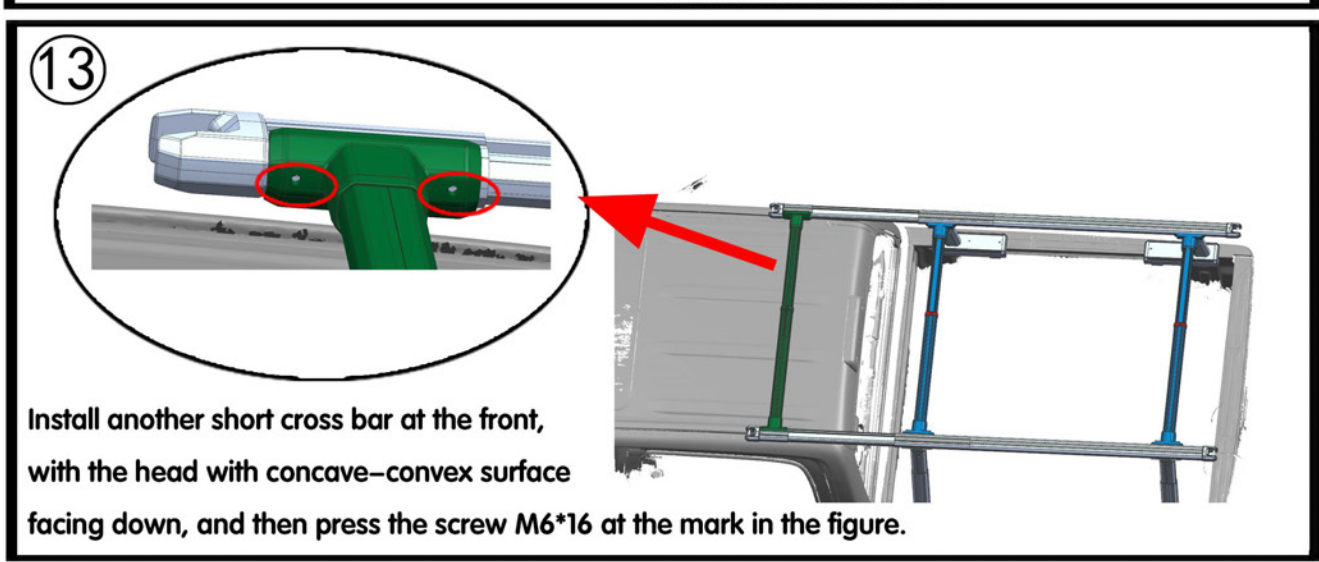
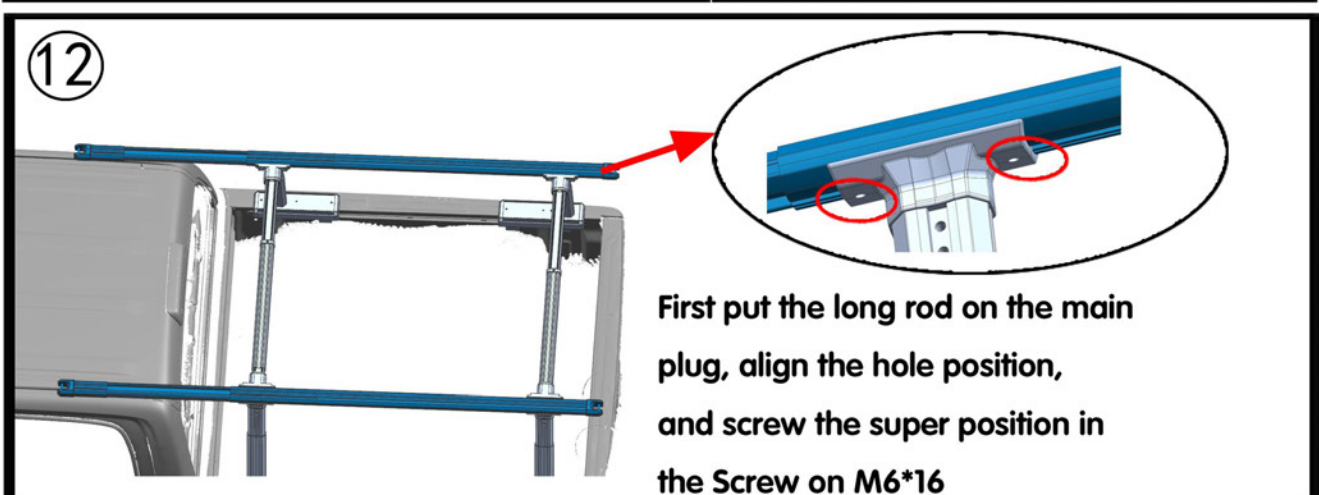
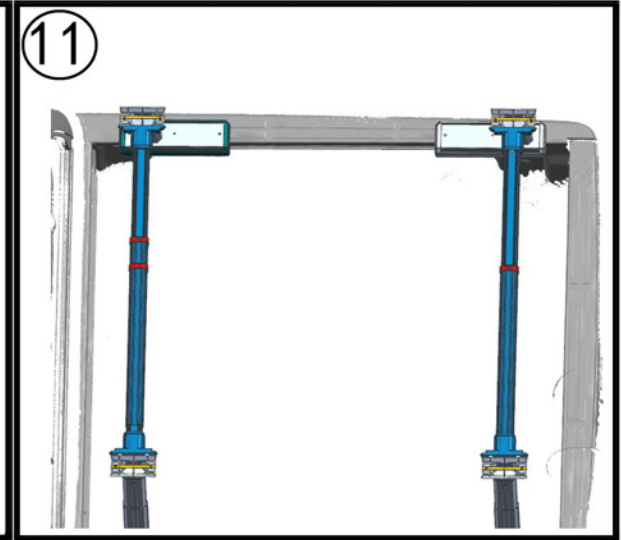
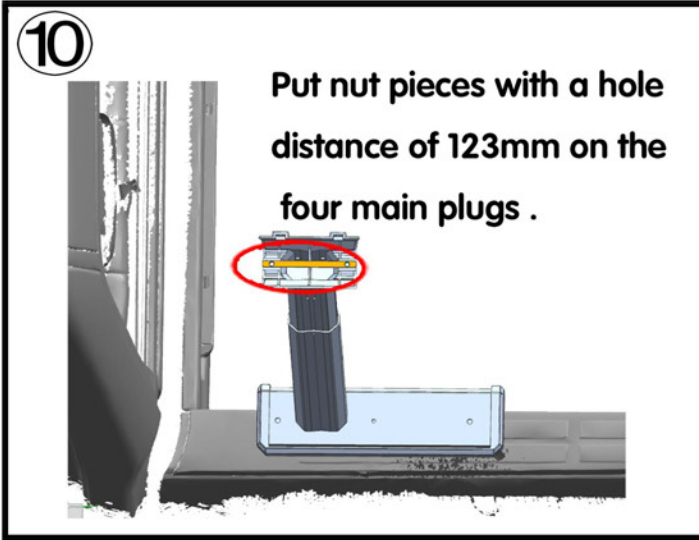
⑧



Put two kinds of gaskets on first, and then close the short cross bar, and then screw M6*16 at the mark in the above figure

⑨





*Finally, please carefully check whether all screws are fully tightened.